

The logo for KMF GROUP, with 'KMF' in red and 'GROUP' in white, set against a dark background.

**KMF**GROUP

[kmf.co.uk](http://kmf.co.uk)

A large, stylized, light green outline logo consisting of the letters 'F' and 'P' intertwined, positioned in the upper left quadrant of the page.

# FOOD & PACKAGING PRODUCTS

Market Leading Precision Sheet Metal  
and Precision Engineering



# SHEET METAL MANUFACTURING

Established in 1971, KMF Group is the leading provider of precision sheet metal manufacturing and precision engineering to companies within the food processing and packaging sectors. We have been delivering innovative and comprehensive manufacturing solutions to our customers for over 45 years.

Our agile manufacturing processes offer the flexibility your products require, while meeting or exceeding all technological, quality and regulatory requirements demanded by the food and drink industries. When you engage with KMF, you gain a reliable, single-source manufacturing partner, committed to exceptional customer service, operation excellence and high quality.



## Services at a glance:

- CNC Punching
- Laser Cutting
- Bending
- Welding
- 5-Axis Machining
- CNC Milling
- CNC Turning
- Deburring / Graining
- Inserting
- Powder Painting / Silk Screening
- Part Identification Marking
- Laser Etching
- Full Traceability
- Passivation
- 3D Design & Development
- Electro-Mechanical Integration
- Assembly
- Custom Despatch

## Expert Precision Sheet Metal Fabrication

Our comprehensive conventional and CNC fabrication and machining facilities extend to 225,000 Square Ft and run 24 hours a day, 7 days a week, located in Staffordshire in the UK and Trencin, Slovakia.

We deliver a wide range of custom manufactured components, including complete turn-key solutions to leading OE manufacturers in the UK and Europe.

Within our modern fabrication and assembly facilities, we offer standard fabrication processes such as CNC punching, bending and welding, as well as value-added services such as product design, electro-mechanical integration and laser engraving. We also house dedicated manufacturing units for

stainless steel fabrications, specialist integration and manufacture for quality stringent sectors such as Aerospace, Medical and Military.

Additionally, our manufacturing facilities are supported by comprehensive in-house testing and quality assurance, to ensure your components are fabricated, machined, coated, integrated or painted exactly how you have specified.

KMF combine cutting edge technology with exceptional lead times, to produce high performance, reliable food processing and inspection equipment, with assured quality that's cost effective and delivered on time.

# MACHINED COMPONENTS & TECHNOLOGICAL INNOVATION

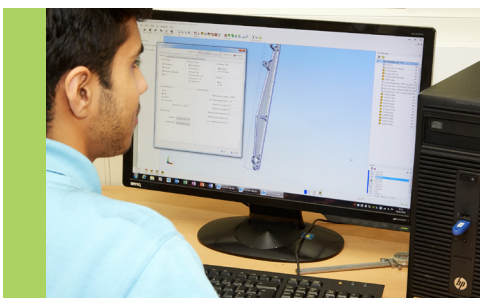
## High Precision Components

KMF is a leading supplier of precision components, meeting the ever-changing challenges, product innovations and demand fluctuations presented by the food processing industries.

Our impressive array of equipment—including simultaneous and fixed 5-axis technology, sliding head machining centres, multiaxial milling and turning machines, precision tapping centres and metrology equipment—serves a single purpose: ensuring the highest precision and quality of the production of machined components.

In addition, our automated Mazak Pallettech systems are designed with the flexibility required for creating shorter cycle times, reducing in-process inventory and simultaneously producing multiple parts over a single shift.

The latest CNC machines, innovative design technologies, experienced industry professionals and an expedited delivery schedule make KMF the perfect manufacturing partner for ambitious manufacturers in this sector.



## Small batches to large-scale product transfers

Although KMF has the capacity to fulfil both small and large batches depending on customer requirements, we have extensive experience of dealing with large scale product transfers.

KMF Group can offer shared expertise and manufacturing resources within the engineering sector, allowing us to act as a single source manufacturing solution for multinational OEMs requiring complex, multi-part assemblies.

We can work on complex production processes and cut investment and tooling costs, allowing clients to focus on core competencies and receive a greater return on their outsourcing investment.

There is no need to use several suppliers as KMF can design, prototype, fabricate, engineer, integrate and assemble complete turnkey solutions, on time and within budget.





# INNOVATIVE, RELIABLE MANUFACTURING SOLUTIONS FOR YOUR CRITICAL PRODUCTS

**KMF Group supplies metal products, components and precision engineered metal fabrications to key players in the food processing and packaging industry.**

Food processing products depend on robust design solutions to support highly specified products that deliver minimum running costs, high performance and smooth and reliable functionality. From design to delivery, KMF work to understand the unique market needs of the food processing sector, to provide solutions that help you reach your objectives. We work as your partner, to improve competitiveness and quality, reduce time to market and simplify your supply chain.

The KMF Group's offering of advanced precision engineering and high-tech metal fabrication can provide the benefits of single-source manufacture and supply, and of complete integration to food processing companies; from the trouble-free manufacture of one-off prototypes to complex component assembly and large-scale batch production.

**We understand that many food processing and packaging OEM's compete by efficiency and so our engineers are fully versed in designing and manufacturing products to drive productivity gains, while acknowledging the sector's commitment to new product development. KMF can help both large and small-scale food and drink manufacturers to translate research into manufacturable products with business benefits.**

We offer expert new product introduction and supply chain management to help our customers streamline processes, enhance productivity, reach compliance with regulatory requirements or optimise costs.

## Product Experience

KMF have over 45 years experience in the manufacture of food processing and packaging equipment. Extensive expertise in stainless steel fabrication, ensures any part you order conforms to your exacting requirements.

- ◆ Weighing instruments for use in laboratory, industrial and food retailing applications
- ◆ X-ray, inspection, quality control and metal detection equipment
- ◆ Portion and pack distribution systems, labelling and print equipment and conveyors



## DEDICATED STAINLESS-STEEL FACILITIES

KMF is a serious player in the stainless-steel fabrication industry, specialising in the manufacture of high-quality fabrications and components which deliver high corrosion resistance, durability and performance over time.

**KMF understands how critical the segregation of stainless steel is to the food and packaging industries.**

To support food and packaging operations, KMF invested in KMF Special Products cell, a bespoke, purpose built manufacturing facility dedicated to stainless steel and non-ferrous fabrication. This unit allows KMF, as stainless-steel fabricators, to offer a comprehensive metal dressing service as part of its metal fabrication service.

The dressing capability permits stainless steel fabrications to be finished to the highest quality in a variety of brushed, grained or glass bead blasted finishes.

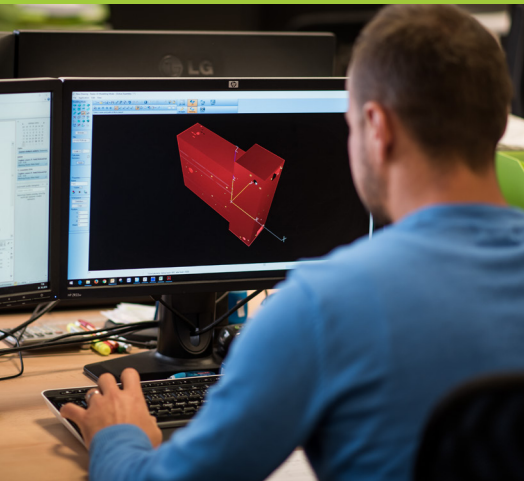
**Our stainless-steel environment is a centre of excellence and many products are developed from concept to finished end-user turnkey solutions.**



KMF's Special Products facility shares CNC punching services with the central metal fabrication site at KMF Precision Sheet Metal but houses a dedicated bending department, welding bays, a bespoke linishing and finishing room and a glass bead blasting cabinet, making KMF the perfect manufacturer for customers who favour separate processing of ferrous and non-ferrous materials.

The Special Products cell allows KMF to excel in supplying the food, drink and pharmaceutical markets and complements the effective working methods, processes and control systems already in place, which make KMF a leading UK supplier of precision sheet metal solutions.





# MANUFAC

## PRODUCT DESIGN

**Innovative solutions to add value and improve competitiveness**

- Expert project management with a focus on quality, cost efficiency, shorter lead times and product suitability
- Design for Manufacture and a value engineering methodology
- The ability to offer comprehensive, integrated solutions

## NEW PRODUCT INTRODUCTION

**Transforming designs into competitive, manufacturable products**

- Rapid prototyping and robust testing for manufacturability and high quality
- The latest technology and software to provide product developments and cost improvements in both production concepts and new product development
- Proven systems to move seamlessly from NPI to repeat order



## MANUFACTURE

**Industry leading technology and process verification to consistently deliver quality**

- Deliver full turn-key manufacturing solutions on-time and defect-free
- Proactively seek solutions to problems with a focus on improving affordability and efficiency
- Unrivalled technology and capacity to comfortably meet growth ambitions with speed and high quality

## ACCREDITATIONS

KMF is one of few UK machining and fabrication manufacturers to hold four ISO accreditations: ISO 9001:2015 Quality Management, ISO 14001 Environmental Standard, ISO 9100 Aerospace and OSHAS Health and Safety Standard.

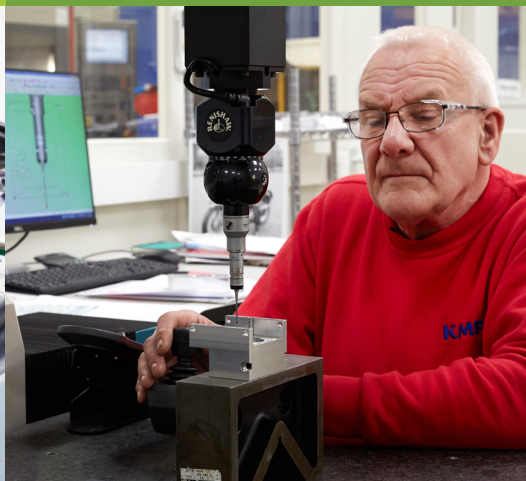
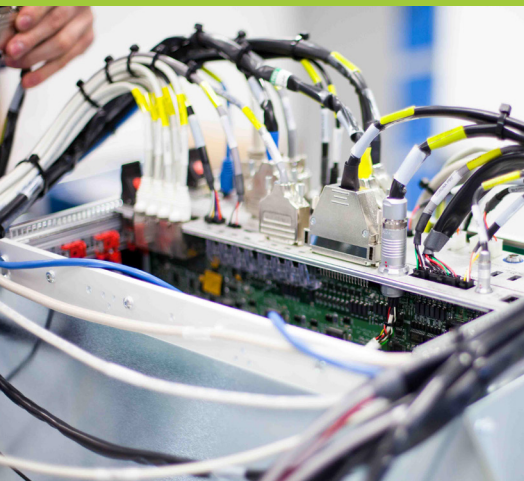
Our continued registration to these accreditations underpins the company's quality management principles while the group's statistical approach to process improvement, allows us to test our performance standards with the utmost rigour, whilst recognising standardisation and customer satisfaction.

To support these quality standards and others, KMF operates dedicated quality teams made up of managers, engineers and technicians to ensure full compliance with strict standards.

# TURING OVERVIEW PROCESS FLOW

KMF aim to build valuable integrated relationships with customers in order to consistently meet high standards for business practices, environmental responsibility and operational excellence. All customers benefit from our integrated processes and management tools, as KMF utilise common procedures throughout all of our manufacturing facilities.

An understanding of your market needs, alongside extensive experience with highly complex product assemblies from design to delivery, allows KMF to provide solutions that help you reach your business objectives.



## SUPPLY CHAIN MANAGEMENT

### Value-adding sourcing and a cost competitive culture

- A strong supplier network which is committed to working towards innovations to drive cost, reliability and capacity
- Aim to strengthen your supply chain by building integral relationships, offering expertise on new materials and processes
- A best in class Enterprise Resource Planning (ERP) system, using a system of integrated applications, to simultaneously manage complex sourcing and production processes

## INTEGRATION

### Full turnkey electro-mechanical integration capabilities

- An electrostatic discharge assembly area for dedicated assembly of static sensitive components and individual integration business units for each customer and their products, in order to provide the most cost-effective manufacturing solutions
- Ability to build looms, manage printed circuit boards and design bespoke functional test fixtures
- Allows KMF to act as a single source manufacturing solution for high-level, value-added assembly work

## QUALITY

### Rigorous quality standards and regulatory requirements

- Product testing, formal systematic methods and interim control points for quality assurance
- Engagement in Continuous Improvement programmes that increase organisational efficiency, reduce product costs, improve product and process performance, reduce cycle times and eliminate waste
- Four ISO Accreditations, representing strong commitment to quality, the environment and health and safety

# UNRIVALLED CAPACITY AND TECHNOLOGY

KMF understand that food processing and packaging manufacturers are challenged with constant product innovations, productivity and cost pressures and ever-changing regulatory requirements. For this reason, technological investment is always a focus of our business strategies.



Over the last 3 years, we have invested over **9 Million pounds** into new machinery and technological advancements. We anticipate the future market needs of our customers and ensure the machines our customers require next week, are available today.

Our unrivalled technology, automation, forecast reaction to our customers' needs and the skills and stability of our staff allows us to deliver quality components with maximum speed, efficiency and reliability.







#### One-Stop-Shop

Flexible and reliable production, from design to delivery



#### Exceptional Turnaround

An average lead time of 10-15 days



#### Excellent Design and NPI Departments

Over 500 new products a month



#### Capacity

Impressive facilities, allowing both small and large batches



#### Accreditation

Allowing quality and dedicated medical, aerospace and stainless steel units



#### Competitive

Industry leading technology and material nesting

## A World Leader in Aerospace Equipment

*“During the several years since we embarked on our journey with KMF Precision Sheet Metal and more recently KMF Precision Engineering, the account has grown considerably in activity and volume as such it now encompasses thousands of unique parts ranging from the simplest of components, right through to the most integrated assemblies.*

*This growth has been supported by the use of several cost models to enable quick, clear and concise pricing to take place.*

*KMF as a group not only supply sheet metal and machined components direct into various manufacturing sites throughout the UK but also directly into our third party supply chain across the globe.*

*KMF are a fully integrated technical partner, providing full DFM activities ranging from simple advice through to complete re design of products and training sessions for our own personal, to ensure that maximum value is achieved*

*Our past and continued growth is very much linked to its Supply Chain Partnership with KMF Group.”*



## Leading Supplier of Automated Solutions within the Food Sector

*“Our association with KMF has been particularly interesting as KMF have exceeded our expectations on a number of fronts, having reached a level of excellence that makes doing things correctly common place. In looking to take on new business KMF have looked at particular portfolios of product and have driven standardisation such that we have achieved commonality throughout the range and standard operations and manufacturing processes providing benefit to both us and KMF.”*

# KMF GROUP

We are a trusted manufacturing partner to successful manufacturers and producers of high value parts in fast growing market segments.

If you are looking to add value to your business, get in touch.

[Sales@kmf.co.uk](mailto:Sales@kmf.co.uk) | [kmf.co.uk](http://kmf.co.uk)

UK

SLOVAKIA

## KMF

PRECISION SHEET METAL

Millennium Way  
High Carr Business Park  
Newcastle-under-Lyme  
Staffordshire. ST5 7UF

01782 569060  
[info@kmf.co.uk](mailto:info@kmf.co.uk)

## KMF

PRECISION ENGINEERING

Unit 5, Rosevale Business Park  
Rosevale Road  
Newcastle-under-Lyme  
Staffordshire. ST5 7UB

01782 563020  
[info@kmfprecision.co.uk](mailto:info@kmfprecision.co.uk)

## KMF

SLOVAKIA  
PRECISION SHEET METAL

Johanna Vaillanta 3043/2  
913 11 Trenčianske Stankovce  
Slovakia

+421 (0)32 6401210  
[info@kmf.sk](mailto:info@kmf.sk)

